



**Alex & Matteo**  
ESTATE AGENTS



**Alex & Matteo**  
ESTATE AGENTS



**Alex & Matteo**  
ESTATE AGENTS



**Alex & Matteo**  
ESTATE AGENTS

## Rotherhithe Street, London, SE16 5EL

A tidy, two bedroom apartment in Rotherhithe within walking distance of The River Thames as well Rotherhithe Pier offering access to Canary Wharf.

The apartment features a well-kept and naturally bright reception room with a tucked away modern kitchen, two double bedrooms, and a stylish family bathroom. Additional storage can be found in the hallway.

The apartment is located within walking distance of local restaurants, bars, co-op, and the greenery of Stave Hill Ecological Park. The property is also close to local bus routes offering excellent transport into central London.

- Naturally Bright 2 Bedroom Apartment
- Plenty of Storage
- Modern Kitchen
- Furnished
- Excellent Location
- Close to Local Amenities

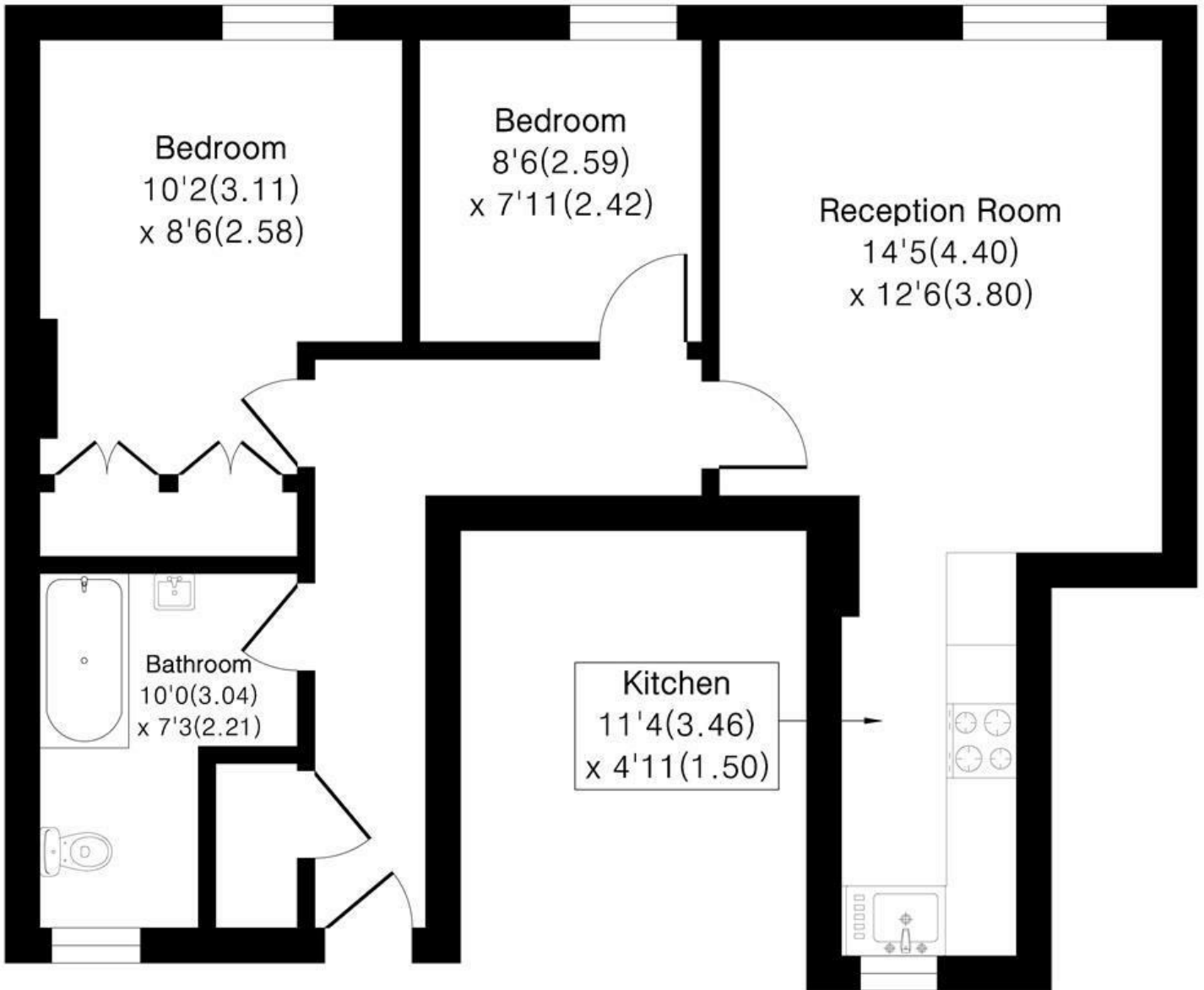
**Alex & Matteo**  
ESTATE AGENTS

**£2,000 Per month**

# The Old Fire Station, Rotherhithe Street, SE16 5EL

Approximate Area = 608 sq ft / 56.4 sq m

For identification only - Not To Scale



## First Floor



Floor plan Produced in accordance with RICS Property Measurement 2nd Edition.  
Incorporating International Property Measurement Standards (IPMS2 Residential).  
Produced for Alex & Matteo Estate Agents.



Energy Efficiency Rating		Current	Potential
Very energy efficient - lower running costs			
(92 plus) <b>A</b>			
(81-91) <b>B</b>			
(69-80) <b>C</b>			
(55-68) <b>D</b>			
(39-54) <b>E</b>			
(21-38) <b>F</b>			
(1-20) <b>G</b>			
Not energy efficient - higher running costs			
<b>England &amp; Wales</b>	EU Directive 2002/91/EC		